



HENAN
河南科技 TECHNOLOGY



河南省振源科技有限公司
Henan Zhenyuan Science & Technology Co.,Ltd.

Add: National Xinxiang Economical&Technical Development Zone

Tel: +86-373-3663336 +86-373-3663285 Fax: +86-373-3663296

Email: info@cementcrusher.com

Website: www.cementcrusher.com



河南省振源科技有限公司
Henan Zhenyuan Science & Technology Co.,Ltd.



企业简介

Enterprise Introduction



河南省振源科技有限公司，是专业从事矿用机械设备的国家级高新技术企业，主要产品有：破碎站、双齿辊破碎机、甲带给料机、大型振动筛分设备、各种系列给料设备及相关配件等。产品广泛应用于煤炭、矿山、电力、冶金、化工等行业，远销东南亚、南亚等地区。凭着质量过硬的产品和周到的服务，积累了良好的市场信誉，并获得了广大客户的信任和好评。

地处黄河之北岸，国家新乡经济技术开发区，占地面积260亩，建筑面积10.9万m²。公司现有员工690人，其中行业专家3名，高级技术人员80人，中级技术人员120人，公司总资产4.38亿元。

公司拥有科学的质量管理体系和先进的产品质量检测手段，在同行业率先通过了ISO9001质量管理体系认证，产品质量始终保持在本行业领先水平。公司拥有三十余项国家专利，曾多次荣获国家、省部级科技奖。

以“不断创新、服务至上、笃守信誉”为企业宗旨；以“创世界一流产品”为己任。公司坚持以市场为导向，以顾客满意为目的，追求卓越绩效并持续改进，以一流的产品，一流的服务创一流的业绩。热烈欢迎各界人士精诚合作，共同创造辉煌的明天，实现和谐共赢！

Henan Zhenyuan Science & Technology Co.,Ltd. Is a hi-tech enterprise specializing in manufacturing mining machinery, Our main products include:crushing station, 2PLF teeth-roller crusher, armored belt feeder, large vibrating screen equipments, various series feeding equipments and related spare parts , which are widely used in coal, metallurgy, mine, electri city, chemical industry etc. Our products were exported to Southeast Asian countries, south Asian and other countries.We gained favorable comment and trust from customers with our high quality products and considerate service, winning noble reputation in the market.

Located on the north bank of the Yellow River, east of Xinxiang City.Our company occupies an area of 109,000.00 square meters, with 690 staffs, among which there are 3 specialists, 80 senior technicians and 120 middle class technicians, and capital asset ¥438,000,000.

We have scientific QC system and passed the ISO9001 quality control system, firstly among fellow companies. With advanced quality testing methods, our products in the industry has maintained the top level. More than 30 national patents have been awarded,and many science and technology prizes have been awarded by State and Provincial governments.

We abide by“ Unceasing innovation, excellent service, keeping reputation”, and always take the market as a guide, trying our best to satisfy customers, pursue super excellence and insist on continual improvement. To create prominent achievement with first-class products and first-class service. We are sincerely hope to cooperate with friends from at home and abroad to create a glorious tomorrow and realize our common aim of “Harmony and Win-win”!

服务全球
Service Worldwide



加工设备
PROCESSING EQUIPMENTS



大型立车
Heavy Duty Vertical Lathe



龙门铣床
Gantry Boring And Milling Machine



抛丸机
Shot Blasting Machine



数显落地铣镗床
Significant Number Of Boring And Milling Machine



数控加工区
CNC Processing Area

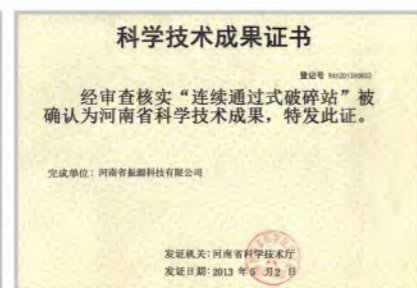
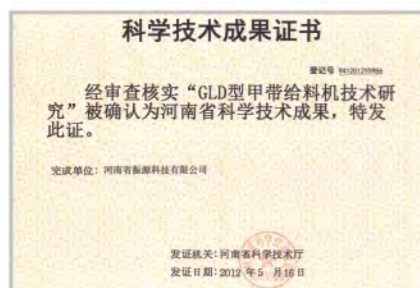


数控等离子切割机
CNC Plasma Cutting Machine

实用新型专利证书
UTILITY MODEL PROFESSIONAL CERTIFICATES



企业荣誉
COMPANY HONOR



2PLF分级式齿辊破碎机

2PLF Series Grading Teeth-roller Crusher



结构及特点 *Structure and Features*

该破碎机主要由电动机、限矩型液力耦合器、减速机、破碎齿辊、机体等部分组成。

1、本破碎机采用剪切、拉伸等破碎技术，基本消除过粉现象。设备体积小、重量轻，适用于井下、厂房及露天作业破碎系统的粗、中碎作业。

2、破碎齿辊为破碎机的关键部件，相向旋转的破碎齿辊将小块物料筛下，大块物料通过破碎齿将其破碎，生产能力大幅提高。

3、破碎齿采用独特新颖的设计结构，特殊材料配方：强度高、韧性好、使用寿命长，耐磨性能佳。

4、破碎齿辊轴承润滑采用集中润滑系统集中润滑，工人劳动强度低，安全可靠、方便快捷，并且在轴承密封方面采用独特设计，可靠性强。

5、采用自调心鼓型齿联轴器剪切销（获得河南省科学技术成果奖）、限矩型液力耦合器、电气多重过载保护，安全可靠。

6、采用PLC控制系统，实现该破碎机的启动，自动润滑，整机过载保护等自动控制，并留有入网接口可与系统的入料、排料等设备运行实施全程的监控，自动化程度高。

The crusher mainly consists of motor, torque-limiting fluid coupling, reducer, teeth roller, and main body.

1.The crusher apply shearing, stretching crushing technology to virtually eliminate over crushing phenomenon. Devices are small, light weight, suitable for underground, plant and open pit mine for coarse crushing, medium crushing operations.

2.Teeth roller is the critical component of crusher, the counter-rotating teeth roller grading the small size material, the bulk material to be crushed by the crushing teeth, it can substantially increase production capacity.

3.Teeth roller use unique new design structure and special material formulation, which has high strength, good toughness, long life and good wear resistance.

4.Roll crusher bearing lubrication apply centralized lubrication system, so it will have low labor intensity and will be safe, reliable, convenient and also a unique design was applied in terms of bearing seals, which is very reliable.

5.With self-aligning drum gear coupling shear pin (Henan Science and Technology Achievement Award), torque-limiting fluid coupling, electrical multiple overload protection, keeping the machine safe and reliable.

6.PLC control system was used to start the crusher, can realize automatic lubrication, machine overload protection and other automatic control. There is a network interface, which can monitor the system of feeding, nesting and other equipment's running condition, to realize a high degree of automation.

工作原理 *Working Principle*

该破碎机由电动机将动力经减速机减速后分别驱动两齿辊相向旋转，当物料从入料口进入破碎腔时，带有旋转齿牙的两齿辊首先将物料筛分，符合要求的物料通过特定空间进入排料溜槽，大块物料受齿辊齿牙的剪切、拉伸、挤压等作用进行破碎，从排料口排出。

This crusher is driven by motor then the power after reducer drive two teeth roll back or phase rotation., two teeth-roller rotate inward synchronously in opposite direction. After material dropping from the inlet to crushing chamber, firstly is classified by the teeth-roller with tooth, those which is accepted would pass through the two rollers to the discharging trough, and the massive materials would be crushed, cut, and then discharged in the discharging opening.



| 规格 / 型号 Specification / Model | 2PLF-140/250 | 2PLF-140/300 | 2PLF-140/350 | 2PLF-140/400 |
|------------------------------------|--------------|--------------|--------------|--------------|
| 进料粒度 (毫米) Inlet Size (mm) | ≤1600 | ≤1600 | ≤1600 | ≤1600 |
| 出料粒度 (毫米) Discharging Size (mm) | ≤400 | ≤400 | ≤400 | ≤400 |
| 处理量 吨/小时 Capacity (t/h) | ≤6000 | ≤7000 | ≤8500 | ≤10000 |

分级式齿辊破碎机120系列 120 series grading teeth-roller crusher for coarse crushing

| 规格 / 型号 Specification / Model | 2PLF-120/150 | 2PLF-120/200 | 2PLF-120/250 | 2PLF-120/300 |
|------------------------------------|--------------|--------------|--------------|--------------|
| 进料粒度 (毫米) Inlet Size (mm) | ≤1500 | ≤1500 | ≤1500 | ≤1500 |
| 出料粒度 (毫米) Discharging Size (mm) | ≤300 | ≤300 | ≤300 | ≤300 |
| 处理量 吨/小时 Capacity (t/h) | ≤3000 | ≤4000 | ≤5000 | ≤6000 |

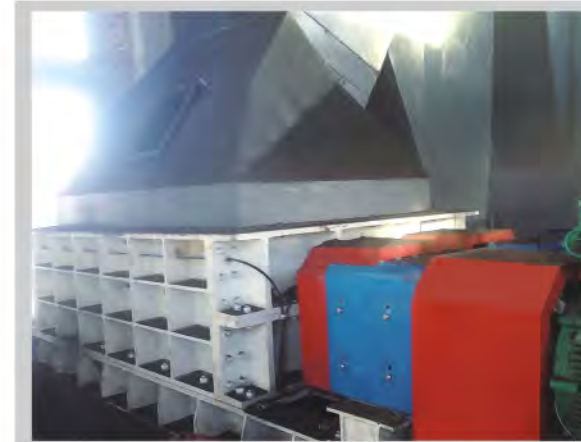
分级式齿辊破碎机100系列 100 series grading teeth-roller crusher for coarse crushing

| 规格 / 型号 Specification / Model | 2PLF-100/150 | 2PLF-100/200 | 2PLF-100/250 | 2PLF-100/300 |
|------------------------------------|--------------|--------------|--------------|--------------|
| 进料粒度 (毫米) Inlet Size (mm) | ≤1200 | ≤1200 | ≤1200 | ≤1200 |
| 出料粒度 (毫米) Discharging Size (mm) | ≤300 | ≤300 | ≤300 | ≤300 |
| 处理量 吨/小时 Capacity (t/h) | ≤2000 | ≤3000 | ≤4000 | ≤5000 |

分级式齿辊破碎机80系列 80 series grading teeth-roller crusher for medium crushing

| 规格 / 型号 Specification / Model | 2PLF-80/150 | 2PLF-80/200 | 2PLF-80/250 | 2PLF-80/300 |
|------------------------------------|-------------|-------------|-------------|-------------|
| 进料粒度 (毫米) Inlet Size (mm) | ≤300 | ≤300 | ≤300 | ≤300 |
| 出料粒度 (毫米) Discharging Size (mm) | 50-150 | 50-150 | 50-150 | 50-150 |
| 处理量 吨/小时 Capacity (t/h) | 300-700 | 400-1000 | 600-1200 | 800-1500 |

使用案例 Use Cases



神华巴彦淖尔能源2PLF100/250
Shenhua Bayannaer Energy



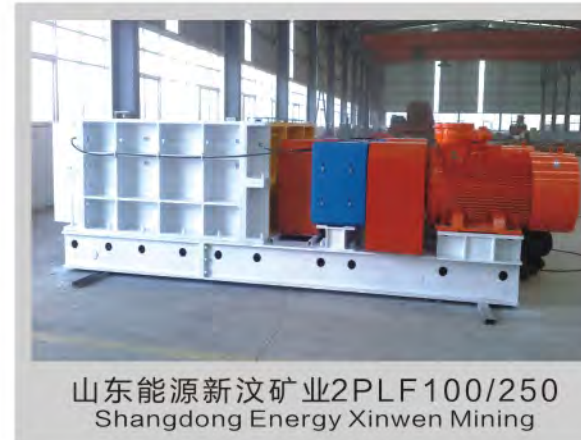
新疆宜化矿业2PLF80/200
Xinjiang Yihua Mining



新疆广汇能源东部矿区2PLF100/300
Xinjiang Guanghui Energy Eastern Mining Area



新疆广汇能源白石湖煤矿2PLF100/350
Xinjiang Guanghui Energy Baishihu Coal Mine



山东能源新汶矿业2PLF100/250
Shandong Energy Xinwen Mining



内蒙古准格尔旗力量煤业2PLF100/250
Inner Mongolia Zhungeerqi Power Coal

2PS系列筛分式破碎机

2PS Series Sizing Crusher



适用范围 Application

筛分式破碎机主要用于半移动式破碎站的二级破碎，选煤厂的原煤破碎，也可用于其他行业（如冶金、电力、焦化、建材等）破碎类似硬度的其他脆性物料。

Sizing Crusher is mainly used for the secondary crushing, raw coal broken of coal preparation plant and also be used to other industries (e.g., coking, metallurgy, electric power, building materials, etc.) to crush other similar hardness brittle materials.

性能特点 Features

1. 该设备具有筛分、破碎双重功能，极大地简化了工艺流程，并节省了设备和基础建设。
2. 该设备采用剪切和拉伸双重破碎原理，双电机通过硬齿面减速机减速传功，设备运行平稳，噪音低，破碎的物料无过粉碎现象。
3. 该设备采用安全销和限矩型液力耦合器双重机械保护功能，设备运行安全可靠。
4. 该设备配备有侧梳齿板，可以通过调整垫块进行出料粒度的调整，工作时两齿辊之间与齿辊与侧梳齿板之间距离保持不变，出料粒度稳定。
5. 电控采用PLC控制，实现对该设备的入料、出料等运行过程的程序控制，自动化程度高。
6. 该设备采用了模块化设计，配置的破碎齿板、侧梳齿板两齿辊之间可以互换，提高了该设备配件的通用性，降低了日常维护成本。
7. 齿板的齿形及固定方式先进，有堆焊耐磨材料与耐磨微合金钢整体铸造两种形式，使用寿命长。
8. 该设备的核心部件齿辊轴的轴承采用大游隙自调心滚子轴承，国内外知名品牌厂家，矿山机械专用抗振抵冲击能力强，经久耐用。润滑系统采用集中自动化供油，工人劳动强度低，安全可靠，方便快捷。

1. This screener crusher with screening and crushing function, greatly simplifies the process, also can save some screening machine and some infrastructure.
2. The device adopts dual principle of shear and tensile, double motor through the reducer can slow the working speed, keep the equipment running smoothly, which can keep the machine have a low noise and low over-crushing rate.
3. The device adopts the safety pin and torque-limiting fluid coupling. This double mechanical protection can make the equipments operate safely and stably.
4. The equipment is equipped with the lateral comb plate, which can be adjusted to change the output size. Between two teeth roll and the distance of roller and comb plate remain the same, which can ensure the stable discharging.
5. Electrical control adopts PLC control, which can realize the program control of feeding and discharging process, also has high degree of automation.
6. The device adopts the modular design, the configuration of the tooth plate and side comb plate are interchangeable, which highly improve the versatility of the equipment accessories, reduce costs of maintenance.
7. Advanced technology are used in tooth shape of tooth plate and fixed mode by two forms of wear resistant materials and micro surfacing alloy material, which has a long service life.
8. Toothed roller bearing, the core component of the equipment use the large clearance self-aligning roller bearings that manufactured by well-known brand manufacturers at home and abroad. They are dedicated to mining machinery, so they have strong resistance for impact and can be used for a long time. Lubrication system adopts centralized automatic oil supply, so the worker labor intensity can be low, which also are safe and reliable, convenient and quick.

使用案例 Use Cases

筛分式破碎机60系列 60 Series Sizing Crusher

| 参数 Parameters | 型号 Model | 2PS-60/100 | 2PS-60/160 | 2PS-60/200 | 2PS-60/250 |
|------------------------------------|-------------|------------|------------|------------|------------|
| 进料粒度 (毫米) Inlet Size (mm) | | ≤200 | ≤200 | ≤200 | ≤200 |
| 出料粒度 (毫米) Discharging Size (mm) | | 50-80 | 50-80 | 50-80 | 50-80 |
| 处理量 吨/小时 Capacity (t/h) | | 200-300 | 250-400 | 350-550 | 450-650 |

筛分式破碎机80系列 80 Series Sizing Crusher

| 参数 Parameters | 型号 Model | 2PS-80/150 | 2PS-80/200 | 2PS-80/250 | 2PS-80/300 |
|------------------------------------|-------------|------------|------------|------------|------------|
| 进料粒度 (毫米) Inlet Size (mm) | | ≤300 | ≤300 | ≤300 | ≤300 |
| 出料粒度 (毫米) Discharging Size (mm) | | 50-100 | 50-100 | 50-100 | 50-100 |
| 处理量 吨/小时 Capacity (t/h) | | 350-700 | 450-900 | 550-1100 | 650-1300 |

筛分式破碎机100系列 100 Series Sizing Crusher

| 参数 Parameters | 型号 Model | 2PS-100/200 | 2PS-100/250 | 2PS-100/300 | 2PS-100/350 | 2PS-100/400 |
|------------------------------------|-------------|-------------|-------------|-------------|-------------|-------------|
| 进料粒度 (毫米) Inlet Size (mm) | | ≤350 | ≤350 | ≤350 | ≤350 | ≤350 |
| 出料粒度 (毫米) Discharging Size (mm) | | 50-120 | 50-120 | 50-120 | 50-120 | 50-120 |
| 处理量 吨/小时 Capacity (t/h) | | 500-1200 | 600-1500 | 700-1700 | 800-2000 | 950-2300 |



新疆八一钢铁2PS80/200
Xinjiang Bayi Steel



新疆圣雄集团黑山煤矿2PS100/350
Xinjiang Shengxiong Company Heishan Coal Mine



新疆圣雄集团黑山煤矿2PS100/350
Xinjiang Shengxiong Company Heishan Coal Mine



新疆大成矿业2PS100/350
Xinjiang Dacheng Mining



贵州永煤科技2PS400/1000
Guizhou Yongmei Technology



神华集团新疆露天矿2PS100/300
Shenhua Group Xinjiang Open-pit Coal Mine